

# Support For Metabolic Syndrome Research

## OYC-Bio laboratory research reagents

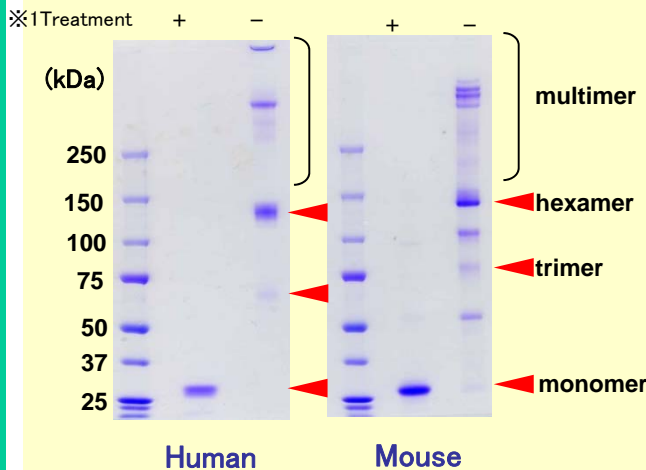
### Adiponectin

Adiponectin, also referred to as Acrp30, AdipoQ and GBP28 is a protein which is highly expressed in adipose cells. Human adiponectin was identified by Dr. Matsuzawa<sup>1</sup>, Osaka University, whereas mouse adiponectin was identified by Lodish<sup>2</sup>, MIT. It forms trimer, hexamer, and high molecular weight multimers in serum<sup>3</sup>. Adiponectin plays a role in physiological processes such as inflammation<sup>4</sup>, anti diabetes<sup>5</sup>, arteriosclerosis<sup>6</sup>, energy homeostasis<sup>7</sup>, and obesity. Plasma levels of adiponectin are reduced in obese patients, so it is thought as one of new biomarkers.

#### Specifications

##### ○ Recombinant Proteins

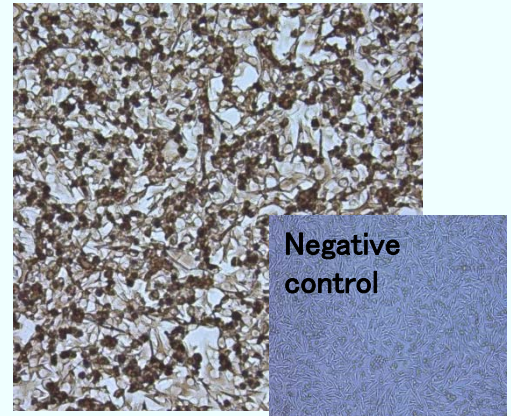
###### SDS-PAGE



Our product was expressed in mammalian cells. It forms multimers in the circulation, and has no tags.

##### ○ Antibodies

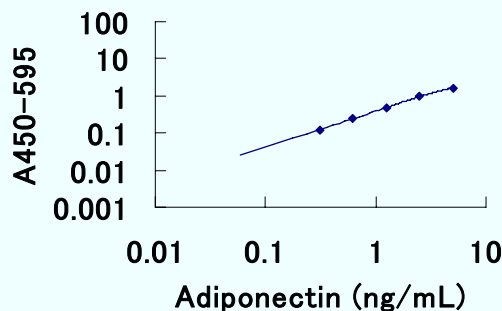
###### IC



Cell: CHO cells producing mouse adiponectin.  
Antibody: Anti mouse adiponectin mAB (1F6)  
Secondary antibody: HRP-conjugated anti rat polyclonal

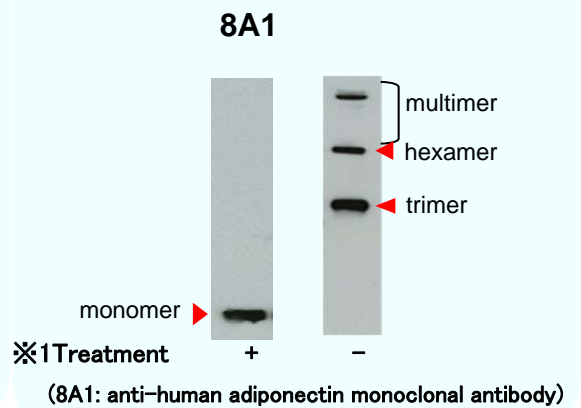
Stain: DAB

###### ELISA



Antigen: Human adiponectin  
Antibody: Anti human adiponectin polyclonal  
Secondary antibody: Biotin-conjugated anti human adiponectin polyclonal

###### Western Blot



※1Treatment: heat the sample with reduction agent  
Adiponectin forms multimers ( 3, 6, 12-18 mer) in serum, while it forms monomer in the treatment with heat and reduction.

www.oyc-bio.jp



ORIENTAL YEAST CO.,LTD.

# Support For Metabolic Syndrome Research

## OYC-Bio laboratory research reagents

### ○ Recombinant Proteins

	Cat.No.	Host	Concentration	Size
Human Adiponectin	47620000	CHO	1 mg/mL	100 µg
Mouse Adiponectin	47024000	CHO	1 mg/mL	100 µg

### ○ Antibody

	Clone	Source	Cat. No.	Application			Reactivity	Size
				WB	IC	ELISA		
Anti Human Adiponectin	8A1	Mouse IgG <sub>1κ</sub> Monoclonal	47022000	Yes	Yes	Yes	Human	500 µg
	8B3	Mouse IgG <sub>1κ</sub> Monoclonal	47021000	Yes	Yes	Yes	Human	500 µg
	-	Rabbit Polyclonal	47023000	Yes	No	Yes	Human Mouse	500 µg
Anti Mouse Adiponectin	1F6	Rat IgG <sub>2aκ</sub> Monoclonal	47046000	Yes	Yes	Yes	Mouse	500 µg
	-	Rabbit Polyclonal	47047000	Yes	No	Yes	Human Mouse	100 µg

### ○ Related Products



HFD-60

#### Laboratory Chow

- High-fat diet (F2HFD2)
- High-fat and sucrose diet; fat 30%(F2HFHSD)
- High-fat diet; fat 60%(HFD-60)

We can prepare your original laboratory chow. Please visit our web site.

<http://www.oyc-bio.jp/products/view/animal010>

### ○ Reference

1. Maeda, K., et al. (1996): *Biochem, Biophys. Res. Commun.* 221: 286.
2. Scherer, P.E., et al. (1995): *J. Biol Chem.* 270, 26746.
3. Waki, H., (2003) : *J. Biol Chem.* 278,40352.
4. Ohashi, K., et al. (2010): *J. Biol Chem.* VOL. 285, 6153.
5. Tonelli, J., et al.(2004): *Diabetes.*53: 1621.
6. Matsuda, M., et al. (2002): *J. Biol Chem.* 277, 37487.
7. Yamauchi, T., et al.(2007): *Nat. Med.* 13: 332 .



**ORIENTAL YEAST CO.,LTD.**

Customer support / service

Tel: + 81-3-3968-1192

Fax: +81-3-3968-4863



FM 541481 / ISO 9001

www.oyc-bio.jp